

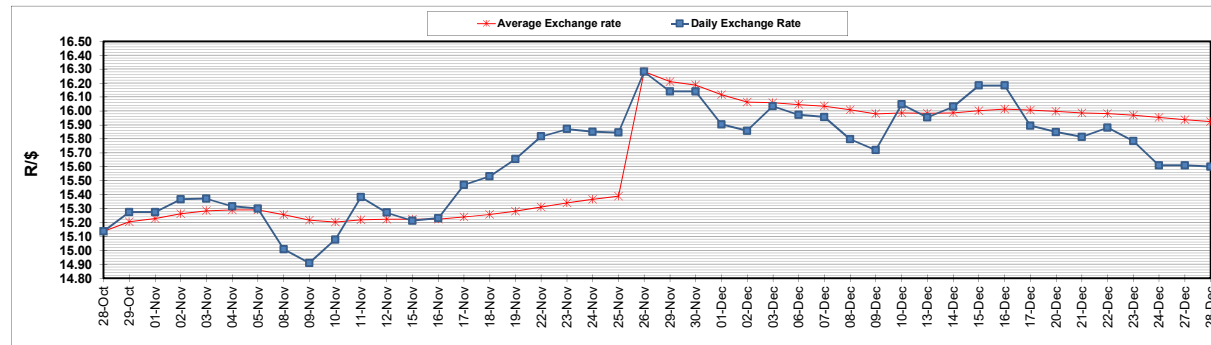
	PETROL 95 ULP	PETROL 93 ULP & LRP	DIESEL 0.05%	DIESEL 0.005%	ILL. PAR.
GAUTENG PUMP PRICE (SA c/l) AS FROM 01/12/2021	2,029.000	2,007.000	-	-	-
WHOLESALE PRICE (SA c/l) AS FROM 01/12/2021	-	-	1,792.480	1,797.880	1,167.688
SINGLE NATIONAL MAXIMUM RETAIL PRICE	-	-	-	-	1,489.000
BASIC FUEL PRICE - 28/12/2021 (SA c/l)	920.902	908.163	896.505	899.415	882.668
PRESS RELEASE CONTRIBUTION TO BFP 01/12/2021 - 28/12/2021 (SA c/l)	973.670	961.670	955.630	961.030	946.128
UNIT OVER/(UNDER) RECOVERY - 28/12/2021 (SA c/l)	52.768	53.507	59.125	61.615	63.460
AVERAGE BASIC FUEL PRICE 26/11/2021 - 28/12/2021	894.157	879.096	875.834	879.402	866.904
AVERAGE UNIT OVER/(UNDER) RECOVERY 26/11/2021 - 28/12/2021	74.745	77.806	74.840	76.410	74.789

### ANALYSIS MOVEMENT OF AVERAGE OVER/(UNDER) RECOVERY

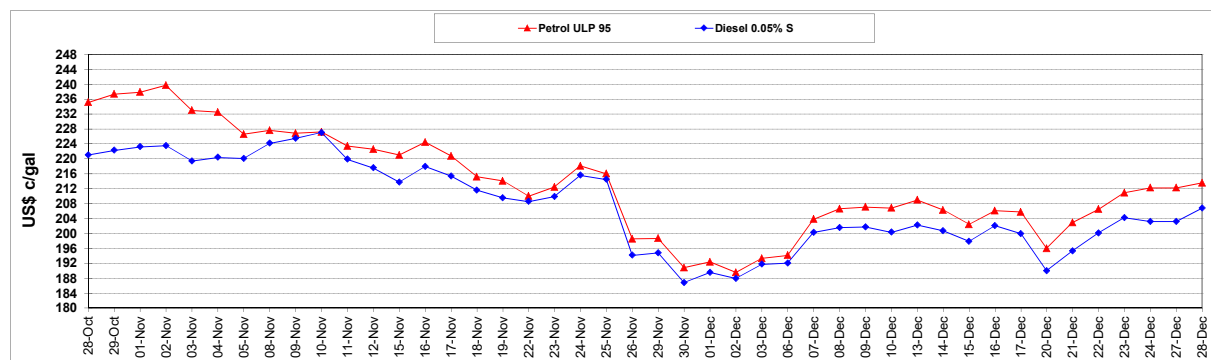
	PETROL 95	PETROL 93	DIESEL 0.05%	DIESEL 0.005%	ILL. PAR.
- MOVEMENT IN INTERNATIONAL PRODUCT PRICES	104.752	107.308	104.232	105.924	103.883
- MOVEMENT IN EXCHANGE RATE	(30.008)	(29.503)	(29.393)	(29.513)	(29.094)
AVERAGE UNIT OVER/(UNDER) RECOVERY 26/11/2021 - 28/12/2021	74.745	77.806	74.840	76.410	74.789

### R/\$ EXCHANGE RATE - (R/\$15.6000 - 28/12/2021)

### EXCHANGE RATE USED IN BASIC FUEL PRICE



### INTERNATIONAL PRODUCT PRICES OF BASKET USED IN BASIC FUEL PRICE



### BASIC FUEL PRICE IN SA CENTS PER LITRE

